



## 263 Sandy Creek Road Riddells Creek VIC

3 2 3

Comprehensively renovated with clear passion and precision, this spectacular historic weatherboard homestead has been transformed into a home of exceptional style and beauty. A spacious three-bedroom, two-bathroom, two living areas, carport and two car garage with spectacular views of Melbourne.

The main bedroom includes a fireplace, walk in robe and very spacious ensuite. The remaining spacious two bedrooms have 3 single door built in robes.

There are two separate living rooms with timber floor and ceiling, two ceiling fans, split system, wood fire and large cornices.

[For full version visit the website](https://www.davidpinorealestate.com.au/sale/vic/macedon-ranges/riddells-creek/residential/house/8039662)

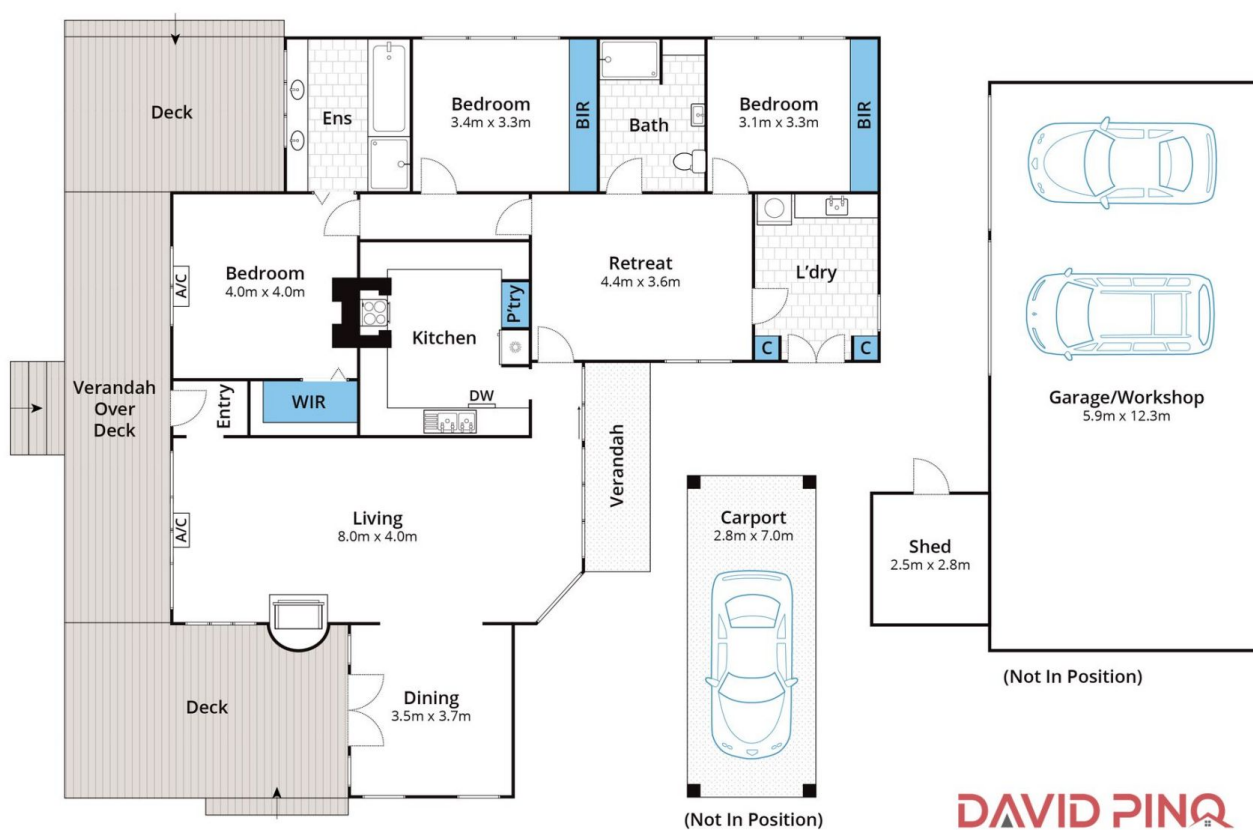
**Type** : House  
**Price** : \$ 1,200,000  
**Land Size** : 6006 sqm  
**View** : <https://www.davidpinorealestate.com.au/sale/vic/macedon-ranges/riddells-creek/residential/house/8039662>



**David Pino**  
0344101799



**Jamie Gramberg**  
0344101799



Approx House Area 164m<sup>2</sup>

Whilst [bwrm.com.au](http://bwrm.com.au) has made every attempt to ensure the accuracy of the floor plan contained here, measurements are approximate and no responsibility is taken for any error, omission, or mis-statement. This plan is for illustrative purposes only.

**263 Sandy Creek Road, Riddells Creek**